



**EMERALD
PLANET**
SMART SOLUTIONS

SMOKE ALARM USER MANUAL

MODEL NUMBER: EP-RF-Li10

Thank you for choosing this smoke alarm with wireless interconnectivity. Please take a few minutes to read the user's manual thoroughly and familiarise yourself and your family with its operation, and save it for future reference.

This unit has been designed to meet the latest safety standards demanded in Australia and complies with the requirements of AS3786:2014.

POWER:	Built-in DC 3V 10yr rated Lithium ion battery (battery not replaceable)
OPERATION CURRENT:	<70mA
ALARM VOLUME:	>85dB(A) at 3 meters
SMOKE SENSITIVITY:	0.09-0.15dB/m
LOCAL SMOKE ALARM SOUND PATTERN:	ISO8201 Bi 0.5s - pause 0.5s - Bi 0.5s - pause 0.5s - Bi 0.5s - pause 1.5s, with a red LED flash, this pattern repeats.
WIRELESS ALARM SOUND PATTERN:	Bi-Bi-pause 1s, repeat this alarm pattern



DESCRIPTION

This unit uses a photoelectric smoke detection chamber. Photoelectric technology is more sensitive to detecting slow smoldering fires which generate thick, black smoke, a little heat and may smolder for hours before bursting into flames. Unlike previous ionizing alarms, this smoke alarm does not contain radioactive material and is harmless to the environment.

Emerald Planet recommends that smoke alarms be installed in every room (except bathrooms and kitchens), and every other area of the home, making sure all people in the home will be able to hear and respond to the alarm when activated.

Each state of Australia has its own legislation regarding smoke alarm requirements. Please refer to the following websites to check your states current installation requirements.

NSW

fire.nsw.gov.au/page.php?id=80

QLD

www.qfes.qld.gov.au/community-safety/smokealarms

SA

mfs.sa.gov.au/site/community_safety/home_fire_and_life_safety_information_sheets_domestic/smoke_alarms_what_you_need_to_know.jsp

WA

dfes.wa.gov.au/safetyinformation/fire/fireinthehome/FireintheHomeManualsGuidelines/DFES_FireintheHome-SmokeAlarm-Legislative-Requirements-LAWS.pdf

TAS

tfseducation.com.au/resources/publications

ACT

esa.act.gov.au/community-information/home-fire-safety/smoke-alarms/

NT

<https://nt.gov.au/emergency/community-safety/fire-safety-at-home/smoke-alarms>

IMPORTANT SAFETY INFORMATION

- 1: The test button accurately tests the smoke alarm functions. Do not use any other test method. Test smoke alarms weekly to ensure proper operation.
- 2: If you're sure it isn't a real alarm, open windows or fan the air around the smoke alarm device to silence it.
- 3: Observe and follow all local and national electrical and building codes for proper installation.
- 4: This smoke alarm is designed to be used in residential premises only. Do not install in non-residential buildings. This smoke alarm is not a substitute for a complete alarm system.
- 5: Install a smoke alarm in every room and on every level of the home. Smoke may not reach the smoke alarm for many reasons. For example, if a fire starts in a remote part of the home, on another level, in a chimney, wall, roof, or on the other side of a closed door, smoke may not reach the smoke alarm in time to alert household members. A smoke alarm will not promptly detect a fire except in the area or room in which it is installed.
- 6: Smoke alarms may not alert every household member every time. The alarm sound is loud in order to alert individuals to a potential danger. However, there may be some circumstances where a household member may not hear the alarm (i.e. outdoor or indoor noise, deep sleepers, drug or alcohol usage, the hard of hearing, etc.). If you suspect that this smoke alarm may not alert a household member, install and maintain specialty smoke alarms. Every household member must hear the alarms warning sound and quickly respond to it to reduce the risk of injury, or death that may result from fire.
- 7: Smoke alarms can only activate when they detect smoke or detect combustion particles in the air. They do not sense heat, flames, or gas. This smoke alarm is designed to give audible warning of a developing fire. However, many fires are fast - burning, explosive, or intentional, and others are caused by carelessness or safety hazards. In these circumstances, there may be insufficient smoke to activate the alarm QUICKLY ENOUGH to ensure safe escape.
- 8: Smoke alarms have limitations. This smoke alarm is not foolproof and is not warranted to protect lives or property from fire. Smoke alarms are not a substitute for insurance. Homeowners and renters should insure their lives and property. In addition, it is possible for the smoke alarm to fail at any time. For this reason, you must test the smoke alarm weekly and replace unit every 10 years.

DO NOT INSTALL SMOKE ALARMS IN THE FOLLOWING PLACES

- 1: Near appliances or areas where normal combustion regularly occurs (kitchens, near furnaces, open fireplaces, hot water heaters etc.).
- 2: In areas with high humidity, like bathrooms or areas near dishwashers or washing machines. Install at least 10 feet away from these areas.
- 3: Near air returns or heating and cooling supply vents. Install at least 3 feet away from these areas. The air could blow smoke away from the detector, interrupting its alarm.
- 4: In rooms where temperatures may fall below 5° or rise above 45°, or in humidity higher than 85%. These conditions could reduce battery life or cause a false alarm.
- 5: In extremely dusty, dirty, or insect-infested areas influence particles interfere with smoke alarm device operation.

OPERATION

ACTIVATION

To activate the smoke alarm, align the mounting plate and turn it clockwise until it snaps into place. The battery is now connected and the smoke alarm is active.

TESTING

Test the unit to ensure proper operation by pressing the test button, this will sound the alarm if the electronic circuitry, horn, and battery are working. If no alarm sounds, please refer to the "Troubleshooting" section for solution.

DO NOT USE AN OPEN FLAME TO TEST YOUR ALARM, YOU COULD DAMAGE THE ALARM OR IGNITE COMBUSTIBLE MATERIALS AND START A FIRE.

CAUTION: DUE TO THE LOUDNESS (85 DECIBELS) OF THE ALARM, ALWAYS STAND AT ARMS-LENGTH AWAY FROM THE UNIT WHEN TESTING. TEST THE ALARM WEEKLY TO ENSURE PROPER OPERATION. ERRATIC OR LOW SOUND COMING FROM YOUR ALARM MAY INDICATE A DEFECTIVE ALARM, PLEASE REFER TO "TROUBLESHOOTING" SECTION FOR SOLUTION.

NOTE: WEEKLY TESTING IS REQUIRED.

LED INDICATORS

Red LED-Flashing once every 40 seconds: indicates that the smoke alarm device is operating properly.

Red LED-Flashing when the test button is pressed, or when the smoke alarm device senses particles of combustion and goes into alarm (constant pulsating sound), the red LED will flash once per second. The flashing LED and pulsating alarm will continue until the air is cleared or test button is released.

Red LED-Alarm silencer (Hush mode) indication: The red LED will flash once every 8 seconds, indicating the smoke alarm device is in the alarm silence (Hush) mode.

Low battery indication - An intermittent "chirp" with red LED flashes once every 40 seconds: indicates that the smoke alarm device is low on battery, you may press the test button to pause the alarm for 10 hours, but it will reset automatically after 10 hours.

Fault indication - The alarm chirp occurs every 40 seconds.

NOTE: WHEN THE UNIT CHIRPS ONCE EVERY 40 SECONDS, YOU CAN PRESS THE TEST BUTTON TO TEMPORARILY PAUSE THIS WARNING TONE FOR 10 HOURS. IT CAN STILL NORMALLY DETECT SMOKE DURING THIS PERIOD, IT ONLY REMOVES NUISANCE WARNING TONE. YOU CAN REFER TO "TROUBLESHOOTING" FOR SOLUTION. IF THERE ARE STILL FAILURES, YOU MUST REPLACE IT WITH A NEW ALARM AT ONCE OR CONTACT YOUR RETAILER DURING WARRANTY PERIOD.

ALARM SILENCE (HUSH MODE)

To silence an alarm, push the test button, it will pause the alarm for approx. 10 minutes. The red LED will flash once every 8 seconds, it indicates the smoke alarm is running in "silence mode". Smoke alarms are designed to minimise nuisance alarms. Combustion particles from cooking may set off the alarm if the alarm is located close to the cooking area.

Large quantities of combustible particles are generated from spills or when grilling/frying. Using the fan on a range hood that vents to outside (non-recirculating type) will also help remove these combustible particles from the kitchen. The alarm silence (test button) is extremely useful in a kitchen area or other areas prone to nuisance alarms. The silence feature is to be used only when a known alarm condition, such as smoke from cooking activates the alarm.

The smoke alarm will automatically reset after approximately 10 minutes, if after this period, particles of combustion are still present, the alarm will sound again. The alarm silencer (silence mode) can be repeatedly until the air has been cleared of the condition causing the alarm.

CAUTION: BEFORE SILENCING THE ALARM IDENTIFY THE SOURCE OF SMOKE AND ENSURE THERE IS NO RISK OF FIRE.

NOTE: DENSE SMOKE WILL OVERRIDE THE SILENCE MODE AND THE ALARM WILL SOUND A CONTINUOUS ALARM AGAIN.

DANGER: IF THE ALARM SOUNDS, AND IT IS NOT BEING TESTED, IT MEANS THE UNIT IS DETECTING SMOKE AND REQUIRES YOUR IMMEDIATE ATTENTION AND ACTION.

MAINTENANCE & CLEANING

The alarm should be cleaned at least once a year.

- To clean your alarm, remove it from its bracket on ceiling, you can clean it by using compressed air or a vacuum cleaner hose with a soft brush attachment. Blow or vacuum around the perimeter of the alarm to remove dust and dirt and debris. The outside of the alarm can be wiped with a damp cloth but you should avoid using a wet cloth in order to avoid water entering the interior of alarm.
- After cleaning, reinstall it and test it by pressing the Test button. The alarm should be replaced if cleaning can't restore the alarm to normal operation.
- This alarm has a low battery monitor which will cause the alarm to "chirp" approx. every 40 seconds and the red LED flash once at the same time for a minimum of thirty days when the battery gets low.

If there is a defective battery or other failures, you can refer to "Troubleshooting" for solution, or deactivate this alarm to stop nuisance alarm which is caused by a failure of their function. If there are still failures during warranty period, you can return to your retailer.

- Don't paint the unit. Paint will seal the vents and interfere with the sensor's ability to detect smoke.

NOTE:

1. REGULAR WEEKLY TESTING IS RECOMMENDED.
2. ALARMS MUST BE REACTIVATED BEFORE USE IF THEY ARE DEACTIVATED.

REPLACING THE ALARM

It is recommended this alarm should be replaced ten years from the date of manufacture. This date has been provided on the product label which is located on the back of the alarm.

WARNING: THE BATTERY IS SEALED INSIDE THE UNIT AND IS NOT REPLACEABLE. PLEASE REPLACE THE ALARM IF THE LOW BATTERY CHIRP SIGNAL OCCURS.

IMPORTANT: DO NOT ATTEMPT TO REMOVE THE COVER TO CLEAN INSIDE. THIS WILL AFFECT WARRANTY.

REPAIR

If the alarm is not operating properly, and is still under warranty, return it to the original place of purchase. If the alarm is no longer under warranty, please replace it immediately with a comparable alarm.

CAUTION: DO NOT ATTEMPT TO REPAIR THE ALARM. IT WILL AFFECT YOUR WARRANTY.

PRACTICE FIRE SAFETY

If the alarm sounds, and the test button has not been pressed, it is warning of a potentially dangerous situation. To prepare for such occurrences, develop family escape plans, discuss them with all household members, and practice them regularly.

- 1: Familiarise everyone with the sound of a smoke alarm and explain what the sound means.
- 2: Determine possible exits from each room and an escape route to the outside from each exit.
- 3: Educate all household members to touch the door and use an alternate exit when the door is hot, instruct them not to open the door if the door is hot.
- 4: Teach household members to crawl along the floor to stay below dangerous smoke, fumes and gases.
- 5: Determine a safe meeting place for all members outside the building.

WHAT TO DO IN CASE OF FIRE

- 1: Do not panic, stay calm.
- 2: Leave the building as quickly as possible. Touch doors to feel if they are hot before opening them. Use an alternate exit if necessary. Crawl along the floor, and do stop to collect anything.
- 3: Meet at a pre-arranged meeting place outside the building.
- 4: Call the fire department from outside the building.
- 5: Do not go back inside a burning building. Wait for the fire department to arrive.

NOTE: THESE GUIDELINES WILL ASSIST YOU IN THE EVENT OF A FIRE, ALWAYS FOLLOW THE INSTRUCTIONS OF FIREFIGHTING PROFESSIONALS.

WARRANTY INFORMATION

Emerald Planet warrants this smoke alarm to the original purchaser.

Emerald Planet warrants each new smoke alarm is free from defects in material and workmanship under normal use and service for a period of 5 years from the date of purchase. This warranty does not cover damage resulting from accident, misuse or abuse or lack of reasonable care of the product.

In no case shall Emerald Planet be liable for any incidental or consequential damages for breach of this or any other warranty express or implied whatsoever. Faulty product can be mailed to the following address with a detailed explanation of problem.

Emerald Planet
2/29 Mitchell Road,
Brookvale NSW 2100

INSTALLATION POSITIONING ADVICE

When mounting an alarm on the ceiling, locate it a minimum of 30 cm from the side wall (see Diagram 5).

- Put smoke alarms at both ends of a bedroom hallway or large room if larger than 10m long.
- Install smoke alarms on sloped, peaked or cathedral ceilings between 500 and 1500mm from the highest point of the ceiling. Smoke alarms in rooms with ceiling slopes greater than 1m in 8 m horizontally should be located on the high side of the room (See Diagram 6).

DIAGRAM 4

MULTIPLE FLOOR PLAN

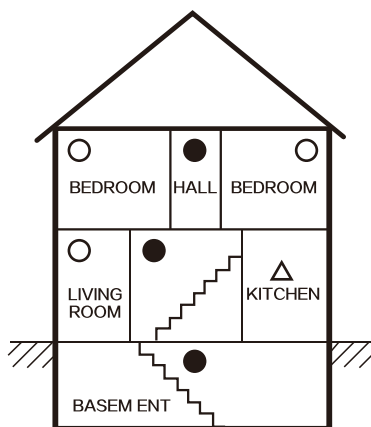


DIAGRAM 5

CEILING PLACEMENT

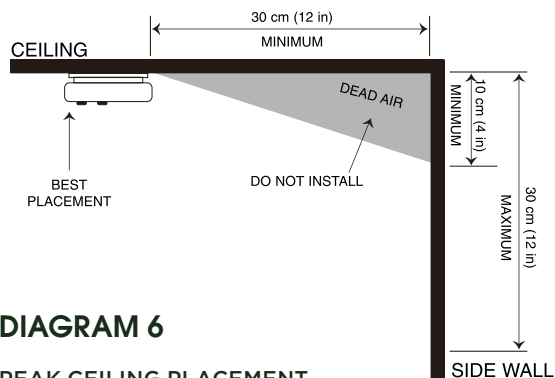
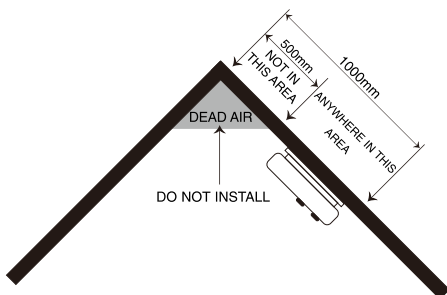
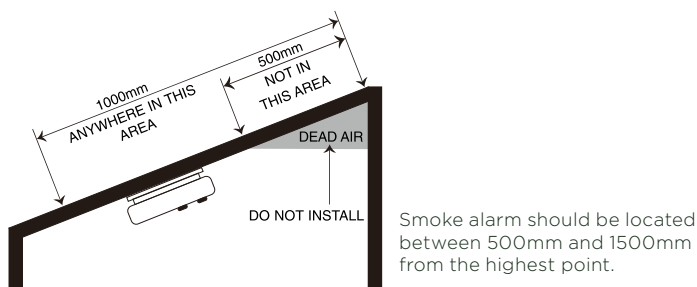


DIAGRAM 6

PEAK CEILING PLACEMENT



SLOPED CEILING PLACEMENT



WIRELESS PAIRING

WIRELESS FREQUENCY:	433MHz
OPERATION CURRENT:	RF Receiver: <6mA RF emitter: <30mA
MAXIMUM NUMBER OF INTERCONNECT PRODUCTS	30PCS
WIRELESS DISTANCE	> 20 meters Note: Make sure the batteries are installed correctly before operating the product.

1. 1: Set the first smoke alarm to “Pair Mode”

Note: Before operation, the unit must be in normal working mode. It is advisable to pair all alarms prior to installation.

- Press the test/hush button 3 times within 2 seconds, a red NET LED will light for a few seconds within the alarm (if not previously networked) or a green NET LED will light for a few seconds within the alarm (if already networked), then a blue NET LED is lit for 30 seconds, the smoke alarm is now ready to pair with the next alarm.

2. Set next smoke alarm to “Learning Mode”

- While the first smoke alarm is in “Pair Mode” with a blue NET LED light showing (pair within 30 seconds) Press the test/hush button on the second smoke alarm 3 times within 2 seconds, both green NET LED will light for 3 seconds indicating the radio link is successfully paired

Note: Products can be paired repeatedly, but all products must be paired with the same primary smoke alarm. Please remember this product.

3. To cancel pairing

If you want to cancel network pairing:

- Ensure the power is be disconnected by turning the mounting plate anti-clockwise until it unlocks.
- Press the test/hush button and hold down (do not release), and at the same time reconnect power by twisting the mounting plate clockwise until it locks into place.
- The red LED will light for 3 seconds, then release the test button when the red LED light switches off.
- When the button is released, the red LED will light for 3 seconds. In these 3 seconds, press the button to clear all paired alarms, the red LED will flash for a while. When the red LED stops flashing, the network is successfully cleared.

4. Radio link test

To ensure that all the products have been successfully paired;

- Select one device, press and hold the button for about 2 seconds until the smoke alarm enters “**Test alarm mode**” and then release the button, the device will automatically send “**Radio link test**” information.
- After short delay, all other paired alarms will enter “**Radio link test**” status (red LED flash twice every second for 5 minutes, beep twice every second for 10 seconds). If an alarm does not start flashing red, then network pairing has failed or the distance between the connected alarms is too great (the connected devices cannot reach each other).

Note: In “**Radio link test**” status device, press the button and the device immediately enter the normal standby mode.

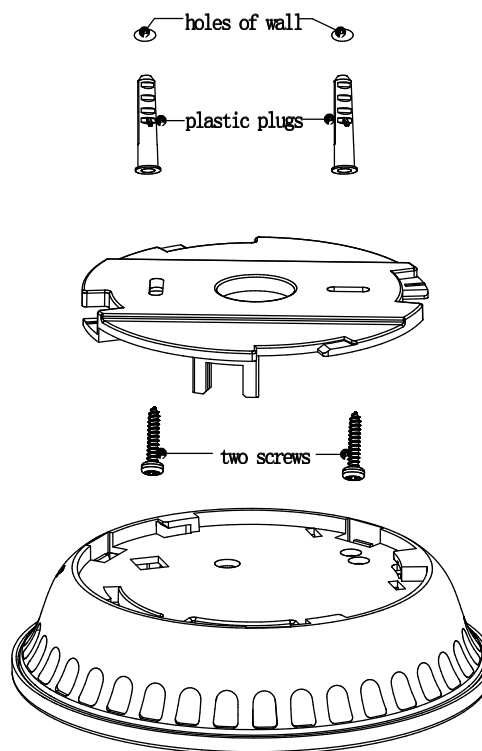
Note: Before installing, place the product in each installed room and select the device in the farthest room for this test, to ensure that other products successfully enter the “**Radio link test**” status.

INSTALLATION

- Turn the alarm body anticlockwise and remove the mounting bracket.
- Position the bracket into the desired position, mark installation holes of the bracket with pencil.
- Bore two 5mm installation holes with an electric drill. Insert the two plastic plugs into the holes with a hammer.
- Attach the bracket to the plastic plugs by driving the screws into the plastic plugs (See Diagram 7).
- Fit the alarm on the bracket and turn the alarm body clockwise, until you feel a click.
- Press and hold the button to test the unit. The alarm will sound once indicating a successful test. If there is no sound, it may indicate a defective alarm or flat battery, you can refer to “Troubleshooting” for solution or return to your retailer during warranty period.
- When testing an interconnected smoke alarm all paired alarms should also sound for 1 minute. This will also test if all smoke alarms are successfully wirelessly interconnected. If an alarm does not sound, re-pair it with the primary alarm.
- If you have any questions on installation, please contact your retailer.
- If you have any questions on installation, you can contact your retailer.

WARNING: TO PREVENT THE RISK OF INJURY, THIS UNIT MUST BE SECURELY FASTENED TO THE WALL OR CEILING IN ACCORDANCE WITH THESE INSTALLATION INSTRUCTIONS.

DIAGRAM 7



TROUBLESHOOTING

PROBLEM	TROUBLE SHOOTING
Alarm does not sound during testing	<ol style="list-style-type: none"> 1. Fit the alarm on the bracket and turn the alarm body clockwise for POWER ON. 2. Clean smoke alarm. Refer to “Maintenance & Cleaning” section. 3. Contact supplier for advice
The alarm “chirps” and red LED flashes every 40 seconds	<ol style="list-style-type: none"> 1. The battery is low. Replace the battery. Refer to “Battery Replacement” section above
The alarm “chirps” every 40 seconds. (no led Flash)	<ol style="list-style-type: none"> 1. Clean smoke alarm. Refer to “Maintenance & Cleaning” section. 2. Replace smoke alarm if problem persists.
Smoke Alarm sounds unnecessarily. (e.g. for no apparent reason, while cooking, when someone is showering etc.)	<ol style="list-style-type: none"> 1. Press the “Test” button to pause the alarm. 2. Clean smoke alarm. Refer to “Maintenance & Cleaning” section. 3. Move smoke alarm to new location if necessary and press the “Test” button.
Interconnected smoke alarm does not sound when others do.	<ol style="list-style-type: none"> 1. Re-pair smoke alarm with primary alarm. 2. Move smoke alarm closer to nearest smoke alarm.